

Graded is an American School serving an international community of learners by inspiring individual excellence.

mission
**inspire
challenge
succeed**
every student
every heart
every mind

Richard Boerner
Superintendent
richard.boerner@graded.br

Stuart Kent
High School Principal
stuart.kent@graded.br

Paul Havern
Co-Director of College Counseling
paul.havern@graded.br

Phyllis Halton
Interim College Counselor
phyllis.halton@graded.br

College admissions officers: Please use MaiaLearning (www.maialearning.com) or email Mariana Mardegam (mariana.mardegam@graded.br) to schedule a campus visit. Our preferred times for visits are:
Wednesday from 11:50 am-12:40 pm
Tuesday from 5:00 pm-8:00 pm
Thursday from 5:00 pm-8:00 pm

OVERVIEW

- Established in 1920.
- Independent, nonprofit, nonsectarian, coeducational day school serving students in grades PK-12.

ACCREDITATION

- Southern Association of Colleges and Schools (SACS)
- AdvancED Accreditation Commission
- Brazilian Ministry of Education
- The International Baccalaureate (IB)

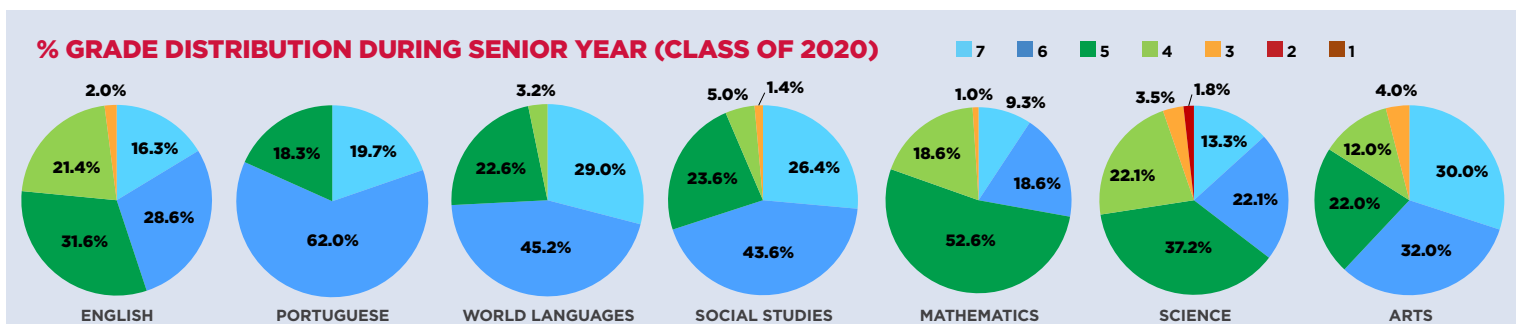
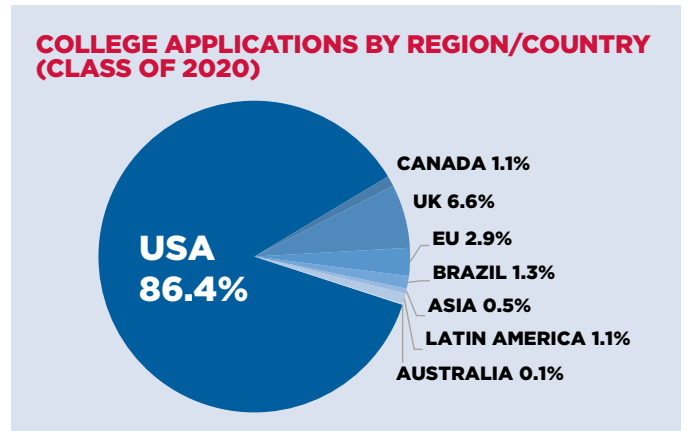
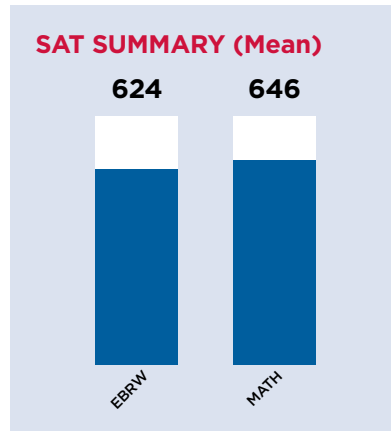
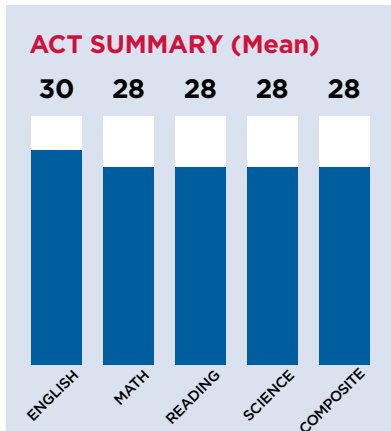
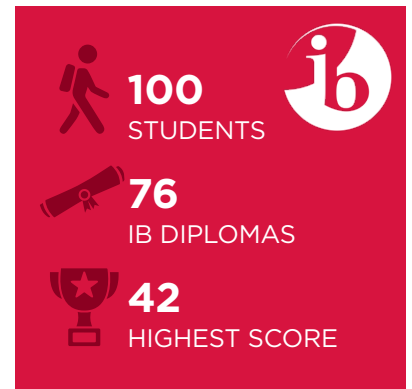
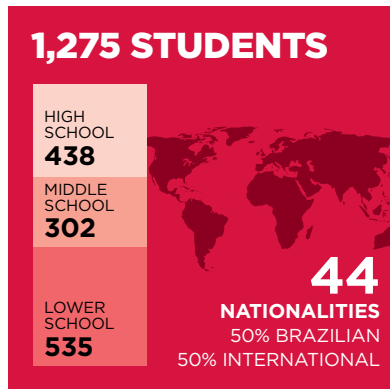
MEMBERSHIPS/AFFILIATIONS

- Association of American Schools of South America (AASSA)
- National Association of Independent Schools (NAIS)
- National Association for College Admission Counseling (NACAC)
- International Association for College Admission Counseling (IACAC)
- The International Baccalaureate (IB)

STUDENT EVALUATION

Grade	Grade Descriptor	Comparison
7	Exemplary	97-100
6	Accomplished	90-96
5	Proficient	84-89
4	Approaching Proficiency	77-83
3	Progressing	70-76
2	Emerging	65-69
1	Insufficient	0-64
NE	Not Enough Evidence to Report on Learning	

The Graded 1-7 grading scale for IB courses is informed by but not equivalent to the IB 1-7 grading system, which reflects completion of two years of coursework. Graded does not calculate GPA nor class rank.



CLASSES OF 2016-2020 COLLEGE ACCEPTANCES

Below is a selection of colleges and universities to which Graded students were accepted between 2016-2020.

UNITED STATES

AMERICAN UNIVERSITY
AMHERST COLLEGE
ARIZONA STATE UNIVERSITY
BABSON COLLEGE
BARD COLLEGE
BARNARD COLLEGE
BARUCH COLLEGE - CUNY
BATES COLLEGE
BENTLEY UNIVERSITY
BERKLEE COLLEGE OF MUSIC
BOSTON COLLEGE
BOSTON UNIVERSITY
BOWDOIN COLLEGE
BRANDEIS UNIVERSITY
BRIGHAM YOUNG UNIVERSITY
BROWN UNIVERSITY
BRYN MAWR COLLEGE
BUCKNELL UNIVERSITY
CALIFORNIA COLLEGE OF THE ARTS
CARNEGIE MELLON UNIVERSITY
CASE WESTERN RESERVE UNIVERSITY
CHAPMAN UNIVERSITY
CLAREMONT MCKENNA COLLEGE
COLGATE UNIVERSITY
COLLEGE OF WILLIAM & MARY
COLORADO STATE UNIVERSITY
COLUMBIA UNIVERSITY
CORNELL UNIVERSITY
DUKE UNIVERSITY
EMERSON COLLEGE
EMORY UNIVERSITY
FLAGLER COLLEGE
FLORIDA STATE UNIVERSITY
FORDHAM UNIVERSITY
FRANKLIN AND MARSHALL COLLEGE
GEORGE MASON UNIVERSITY
THE GEORGE WASHINGTON UNIVERSITY
GEORGETOWN UNIVERSITY
GEORGIA INSTITUTE OF TECHNOLOGY
GRINNELL COLLEGE
HAMPSHIRE COLLEGE
HARVARD UNIVERSITY
HARVEY MUDD COLLEGE
HAVERFORD COLLEGE
INDIANA UNIVERSITY BLOOMINGTON
JOHNS HOPKINS UNIVERSITY
LAWRENCE UNIVERSITY
LOYOLA MARYMOUNT UNIVERSITY
LYNN UNIVERSITY
MACALESTER COLLEGE
MANHATTAN SCHOOL OF MUSIC
MICHIGAN STATE UNIVERSITY
MIDDLEBURY COLLEGE
MOUNT HOLYOKE COLLEGE
THE NEW SCHOOL
NEW YORK UNIVERSITY
NORTHWESTERN UNIVERSITY
OCCIDENTAL COLLEGE
OTIS COLLEGE OF ART AND DESIGN
PARSONS SCHOOL OF DESIGN,
THE NEW SCHOOL

PENNSYLVANIA STATE UNIVERSITY
- UNIVERSITY PARK
PEPPERDINE UNIVERSITY
POMONA COLLEGE
PRATT INSTITUTE
PURDUE UNIVERSITY
QUINNIPIAC UNIVERSITY
REED COLLEGE
RENSSELAER POLYTECHNIC INSTITUTE
RINGLING COLLEGE OF ART AND DESIGN
ROLLINS COLLEGE
RUTGERS UNIVERSITY - NEW BRUNSWICK
SARAH LAWRENCE COLLEGE
SCHOOL OF THE ART INSTITUTE OF CHICAGO
SCHOOL OF VISUAL ARTS
SMITH COLLEGE
SOUTHERN METHODIST UNIVERSITY
STANFORD UNIVERSITY
SWARTHMORE COLLEGE
SYRACUSE UNIVERSITY
TEXAS A&M UNIVERSITY - COLLEGE STATION
TRINITY UNIVERSITY
TUFTS UNIVERSITY
TULANE UNIVERSITY
UNITED STATES MILITARY ACADEMY - ARMY
UNIVERSITY OF CALIFORNIA, BERKELEY
UNIVERSITY OF CALIFORNIA, DAVIS
UNIVERSITY OF CALIFORNIA, IRVINE
UNIVERSITY OF CALIFORNIA, LOS ANGELES
UNIVERSITY OF CALIFORNIA, SAN DIEGO
UNIVERSITY OF CALIFORNIA, SANTA BARBARA
UNIVERSITY OF CALIFORNIA, SANTA CRUZ
UNIVERSITY OF CHICAGO
UNIVERSITY OF COLORADO - BOULDER
UNIVERSITY OF CONNECTICUT
UNIVERSITY OF FLORIDA
UNIVERSITY OF HOUSTON
UNIVERSITY OF ILLINOIS AT
URBANA-CHAMPAIGN
UNIVERSITY OF MARYLAND - COLLEGE PARK
UNIVERSITY OF MASSACHUSETTS - AMHERST
UNIVERSITY OF MIAMI
UNIVERSITY OF MICHIGAN - ANN ARBOR
UNIVERSITY OF MINNESOTA - TWIN CITIES
UNIVERSITY OF NORTH CAROLINA
- CHAPEL HILL
UNIVERSITY OF NOTRE DAME
UNIVERSITY OF OREGON
UNIVERSITY OF PENNSYLVANIA
UNIVERSITY OF PITTSBURGH
UNIVERSITY OF RICHMOND
UNIVERSITY OF ROCHESTER
UNIVERSITY OF SAN DIEGO
UNIVERSITY OF SAN FRANCISCO
UNIVERSITY OF TAMPA
UNIVERSITY OF TEXAS AT AUSTIN
UNIVERSITY OF VERMONT
UNIVERSITY OF VIRGINIA
UNIVERSITY OF WASHINGTON - SEATTLE
UNIVERSITY OF WISCONSIN - MADISON
VANDERBILT UNIVERSITY
WAKE FOREST UNIVERSITY
WESLEYAN UNIVERSITY
YALE UNIVERSITY

ASIA

HANYANG UNIVERSITY
INTERNATIONAL CHRISTIAN UNIVERSITY
KEIO UNIVERSITY
SUNY KOREA
THE UNIVERSITY OF HONG KONG
WASEDA UNIVERSITY
YONSEI UNIVERSITY - UNDERWOOD

AUSTRALIA

UNIVERSITY OF SOUTH AUSTRALIA

BRAZIL

ALBERT EINSTEIN - INSTITUTO
DE ENSINO E PESQUISA
ESCOLA SUPERIOR DE PROPAGANDA
E MARKETING (ESPM)
FUNDAÇÃO ARMANDO ÁLVARES
PENTEADO (FAAP)
FUNDAÇÃO GETÚLIO VARGAS (FGV)
FUNDAÇÃO INSTITUTO DE
ADMINISTRAÇÃO (FIA)
FACULDADES METROPOLITANAS UNIDAS (FMU)
IBMEC, SÃO PAULO
INSTITUTO DE ENSINO E PESQUISA (INSPE)
PONTIFÍCIA UNIVERSIDADE CATÓLICA
DE SÃO PAULO (PUC)
SÃO LEOPOLDO MANDIC
UNIVERSIDADE ANHEMBI MORUMBI
UNIVERSIDADE CIDADE DE
SÃO PAULO (UNICID)
UNIVERSIDADE NOVE DE JULHO (UNINOVE)
UNIVERSIDADE PAULISTA (UNIP)
UNIVERSIDADE PRESBITERIANA MACKENZIE
UNIVERSIDADE SANTO AMARO (UNISA)

CANADA

CONCORDIA UNIVERSITY - MONTREAL
MCGILL UNIVERSITY
UNIVERSITY OF MARYLAND
MCMASTER UNIVERSITY
QUEEN'S UNIVERSITY
SHERIDAN COLLEGE
UNIVERSITY OF BRITISH COLUMBIA
UNIVERSITY OF OTTAWA
UNIVERSITY OF TORONTO
VANCOUVER ISLAND UNIVERSITY
WESTERN UNIVERSITY

EUROPEAN UNION

ECOLE HÔTELIÈRE DE LAUSANNE
EDINBURGH NAPIER UNIVERSITY
EINDHOVEN UNIVERSITY OF TECHNOLOGY
ERASMUS UNIVERSITEIT ROTTERDAM
GHENT UNIVERSITY
HANZE UNIVERSITY OF APPLIED
SCIENCES, GRONINGEN
IE UNIVERSITY - MADRID
IE UNIVERSITY - SEGOVIA
JACOBS UNIVERSITY BREMEN
KATHOLIEKE UNIVERSITEIT LEUVEN
LEIDEN UNIVERSITY COLLEGE THE HAGUE
MAASTRICHT UNIVERSITY
MONDRAGON UNIBERTSITATEA

SAINT LOUIS UNIVERSITY, MADRID
THE SORBONNE
TILBURG UNIVERSITY
UNIVERSIDAD AUTÓNOMA DE MADRID
UNIVERSITA BOCCONI
UNIVERSITEIT VAN AMSTERDAM
UNIVERSITY COLLEGE MAASTRICHT
UNIVERSITY COLLEGE UTRECHT
UNIVERSITY OF AMSTERDAM
UNIVERSITY OF MAASTRICHT
UNIVERSITY OF TWENTE
UTRECHT UNIVERSITY
WAGENINGEN UNIVERSITY

LATIN AMERICA

BUENOS AIRES TECHNOLOGY INSTITUTE
DAMASO ANTONIO LARRAÑAGA CATHOLIC
UNIVERSITY OF URUGUAY
IBERO-AMERICAN UNIVERSITY, MEXICO CITY
TECNOLÓGICO DE MONTERREY
UNIVERSIDAD DEL BELGRANO
UNIVERSIDAD DEL CEMA
UNIVERSIDAD TORCUATO DI TELLA

UNITED KINGDOM

BPP UNIVERSITY
BRUNEL UNIVERSITY LONDON
CARDIFF UNIVERSITY
CITY, UNIVERSITY OF LONDON
COVENTRY UNIVERSITY
GOLDSMITHS, UNIVERSITY OF LONDON
HULT INTERNATIONAL BUSINESS
SCHOOL - LONDON
KEELE UNIVERSITY
KING'S COLLEGE LONDON
LANCASTER UNIVERSITY
LIVERPOOL JOHN MOORES UNIVERSITY
LONDON COLLEGE OF FASHION
LONDON METROPOLITAN UNIVERSITY
NEWCASTLE UNIVERSITY
OXFORD BROOKES UNIVERSITY
SOAS UNIVERSITY OF LONDON
ST GEORGE'S, UNIVERSITY OF LONDON
SWANSEA UNIVERSITY
THE LONDON SCHOOL OF ECONOMICS
AND POLITICAL SCIENCE
UNIVERSITY COLLEGE LONDON
UNIVERSITY OF BIRMINGHAM
UNIVERSITY OF CAMBRIDGE
UNIVERSITY OF EDINBURGH
UNIVERSITY OF ESSEX
UNIVERSITY OF GLASGOW
UNIVERSITY OF MANCHESTER
UNIVERSITY OF NOTTINGHAM
UNIVERSITY OF SOUTH WALES
UNIVERSITY OF ST ANDREWS
UNIVERSITY OF SUSSEX
UNIVERSITY OF THE ARTS LONDON
UNIVERSITY OF WARWICK

COURSE OFFERINGS

ARTS

ACTING AND IMPROVISATION
ART FOUNDATIONS
BEGINNING ORCHESTRA
CERAMICS - WHEEL AND EXTRUDER
CERAMICS AND SCULPTURE
CHOIR
COMPUTER GRAPHICS
DESIGN MODELING
DIGITAL MUSIC
DRAWING
HIGH SCHOOL GUITAR
IB SL/HL VISUAL ARTS
JAZZ BAND
MULTIMEDIA ART
ORCHESTRA
PAINTING
PHOTOGRAPHY I/II
SENIOR BAND
SENIOR CHOIR
THEATER ARTS
THEATER PRODUCTION
THEATER SAMPLER
YEARBOOK DESIGN AND PUBLICATION

ENGLISH

ENGLISH 9: INDIVIDUALS AND SOCIETY

ENGLISH 10: POWER - RACE,
CLASS AND GENDER
IB SL/HL ENGLISH A: LANGUAGE & LITERATURE
IB SL/HL ENGLISH A: LITERATURE

INTERDISCIPLINARY

ENGLISH FOR ACADEMIC PURPOSES (EAP)
ENGLISH LANGUAGE LEARNING (ELL)
JUNIOR CORE SEMINAR
JUNIOR CORE SEMINAR: TOK, EE, CAS
PEER GROUP CONNECTION (PGC)
SENIOR CORE SEMINAR
SENIOR CORE SEMINAR: TOK, EE, CAS

MATHEMATICS

IB SL/HL ANALYSIS AND APPROACHES
IB SL/HL APPLICATIONS AND INTERPRETATION
INTEGRATED MATHEMATICS I: FOUNDATION/
STANDARD/EXTENDED
INTEGRATED MATHEMATICS II: FOUNDATION/
STANDARD/EXTENDED

PHYSICAL AND HEALTH EDUCATION

HIGH SCHOOL HEALTH
PHYSICAL EDUCATION

SCIENCE

BIOLOGY AND LIFE SCIENCE
CHEMISTRY AND INTRODUCTION TO PHYSICS
COMPUTER PROGRAMMING PRINCIPLES
ENGINEERING AND FLIGHT
ENGINEERING AND ROBOTICS
IB SL ENVIRONMENTAL SYSTEMS
AND SOCIETIES
IB SL/HL BIOLOGY
IB SL/HL CHEMISTRY
IB SL/HL COMPUTER SCIENCE
IB SL/HL PHYSICS
INTRODUCTION TO COMPUTER SCIENCE
INTRODUCTION TO ENGINEERING DESIGN
WEBSITE DESIGN AND CREATION

SOCIAL STUDIES

9TH GRADE SOCIAL STUDIES
10TH GRADE SOCIAL STUDIES
BRAZILIAN HISTORY AND CULTURE
BRAZILIAN SOCIAL STUDIES
DISSERTAÇÃO PARA VESTIBULARES
IB SL BRAZILIAN SOCIAL STUDIES
IB SL/HL ECONOMICS
IB SL/HL HISTORY
IB SL/HL PSYCHOLOGY

WORLD LANGUAGES

FRENCH ADDITIONAL LANGUAGE ADVANCED
FRENCH ADDITIONAL LANGUAGE I/II/III
IB SL FRENCH AB INITIO
IB SL SPANISH AB INITIO
IB SL/HL FRENCH A: LANGUAGE
AND LITERATURE
IB SL/HL FRENCH B
IB SL/HL PORTUGUESE A:
LANGUAGE & LITERATURE
IB SL/HL PORTUGUESE B
IB SL/HL SPANISH A LANGUAGE & LITERATURE
IB SL/HL SPANISH B
PORTUGUESE 10
PORTUGUESE 9
PORTUGUESE ADDITIONAL
LANGUAGE ADVANCED
PORTUGUESE ADDITIONAL LANGUAGE I/II/III
SPANISH 10
SPANISH 9
SPANISH ADDITIONAL LANGUAGE I/II/III

Graded School complies with **NACAC's Statement of Principles of Good Practice**. In accordance, applicable disciplinary issues will be reported to colleges. The College Counseling Office will also report any significant change in a student's academic status or qualification, including personal conduct record between the time of recommendation and graduation.

GRADED - THE AMERICAN SCHOOL OF SÃO PAULO

CEEB 910-650

Av. José Galante, 425 - São Paulo, SP - 05642-000 - Brazil

Phone: +55 11 3747 4800

www.graded.br